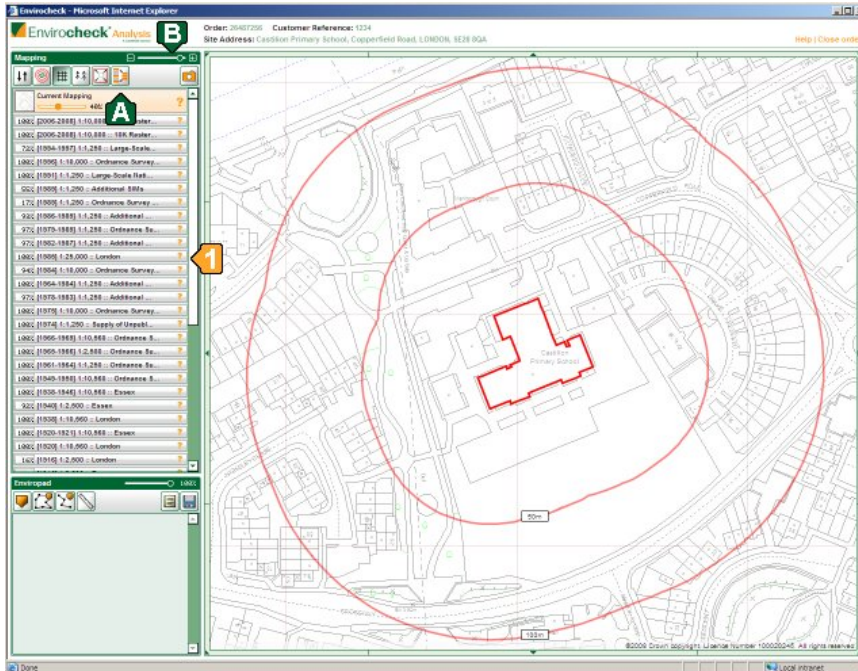


Quick Start Guide

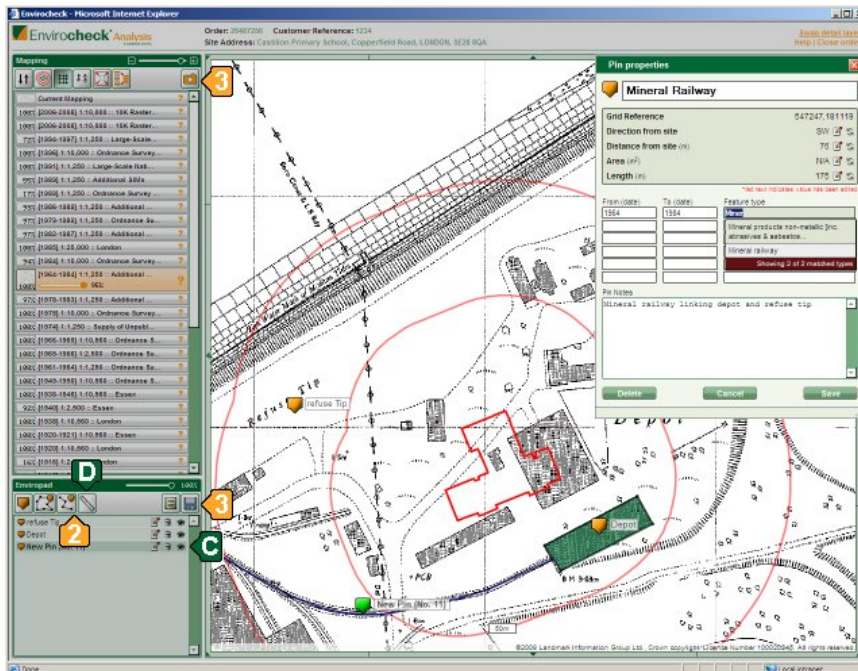


1 STEP 1: VIEWING MAPPING & AERIAL LAYERS

You can view any of the mapping and aerial layers listed down the left hand side by clicking on the name of them. The transparency of the layers can be adjusted using the opacity slider allowing you to compare two or more layers for your analysis.

TOP TIPS:

- A** To see immediately the layers you are currently viewing, click on the Show only active layers button.
- B** The easiest way to zoom in and out is using the wheel on your mouse. If you don't have a wheel on your mouse, or are not comfortable with the wheel, you can use the slider:



2 STEP 2: MARKING FEATURES

You can use the pin tools to mark and identify point, polygon and linear features on the map layers



3 STEP 3: OBTAINING OUTPUT

You capture snap shots to save as JPEG images of your map screen to insert into your reports, and export the Enviropad data as an excel file.

TOP TIPS:

- C** To edit a pin either double left click on the pin name in the Enviropad, or double left click on the pin on the map.
- D** Use the dynamic measuring tool to measure distances on the map. move your cursor to the point on the map you would like to measure from, hold down the left mouse button and move your cursor to the point on the map you would like to measure to.

A FULL ENVIROCHECK ANALYSIS USER GUIDE IS AVAILABLE ONLINE

Envirocheck Analysis contacts:

Phone: 0844 844 9952

Email: customerservices@landmarkinfo.co.uk

www.envirocheck.com